

Dallas/Fort Worth International

679,820 flights in 2014
3rd among US airports
(per ASPM/ATADS)



NTX Research Station...

- NASA research assets embedded in a high-demand, varied operational air transport environment
- Access to ARTCC, TRACON, Towers, 3 air carrier AOCs (American, Envoy and Southwest), and 2 major airports all within 12 miles.
- Supports NASA NextGen research activities from concept development through operational field evaluation.



PARTNERSHIPS



American Airlines

More than 1.1M flights in 2014
1st among US air carriers
(per BTS includes USAir)



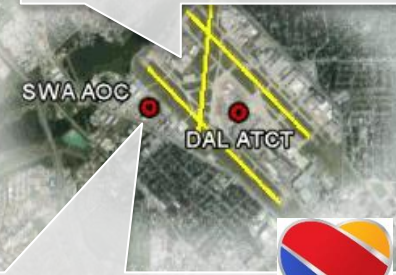
NTX Laboratory...

- 5000 ft² purpose-built, dedicated, air traffic management research facility
- Re-configurable computer labs, dedicated radio tower, established data links to local operational facilities and NASA centers.
- Research engineers experienced in air traffic operations analysis, technology development, and field evaluations



Dallas Love Field

182,949 flights in 2014
41st among US airports
(per ASPM/ATADS)



Southwest Airlines

More than 1.1M flights in 2014
2nd among US air carriers
(per BTS)

